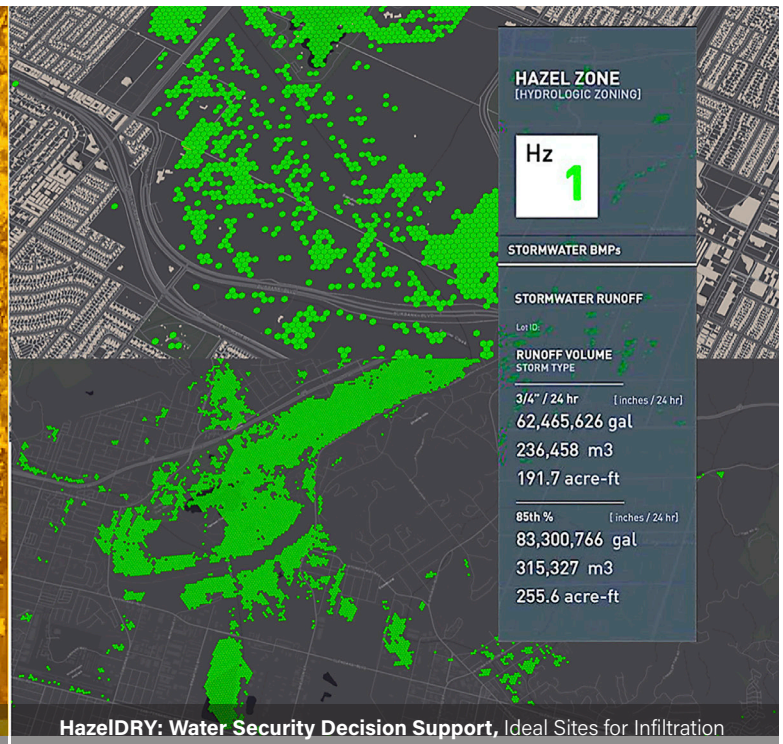
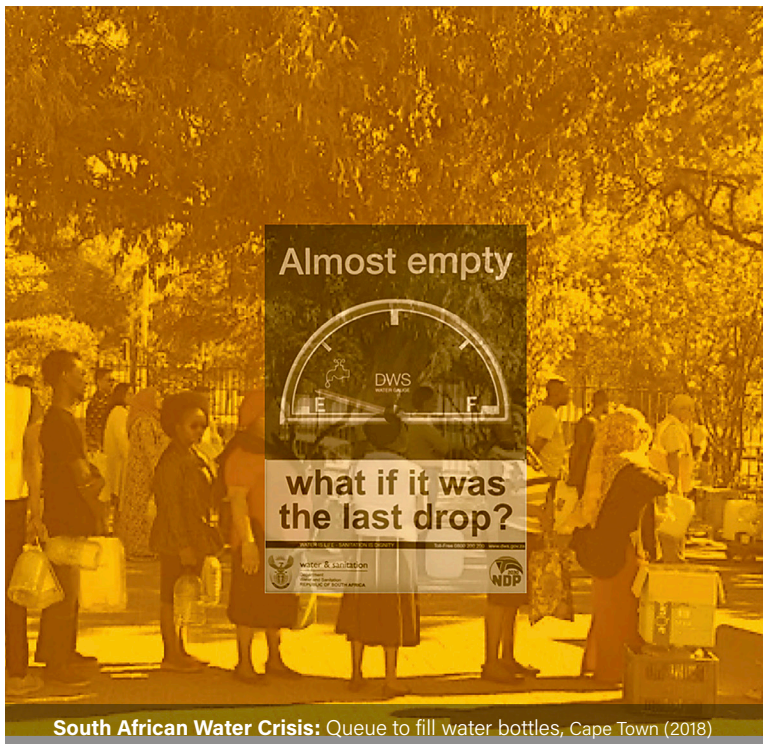


## Build Water Security

Leverage stormwater management for enhanced water supplies.



### Case Study:

Dry cities on every continent face periodic water shortages. Groundwater supplies can be recharged through strategic capture of (infrequent but intensive) rain. HazelDRY [above right], a sister software to HazelFLOOD, identifies where it is cheapest and safest to infiltrate stormwater and build clean reliable groundwater supplies in water-stressed cities.

**Water scarcity is one of the largest global risks over the next decade.**  
—World Economic Forum

**Build buffer against the catastrophic impacts of drought.**

### HazelDRY is designed to answer:

- Where are the precise opportunities to capture and store stormwater, building safe, reliable supply economically?
- Where can we leverage green infrastructure investments to achieve multiple water, economic, and social equity benefits?
- Using which recommended best practices, and with what projected costs/benefits?